



Connecting business
Connecting people

The Connected Business

Delivering Superfast Business Connectivity

Business Systems

Email

CRM

Back-Up

Website

Cloud Storage

Office 365

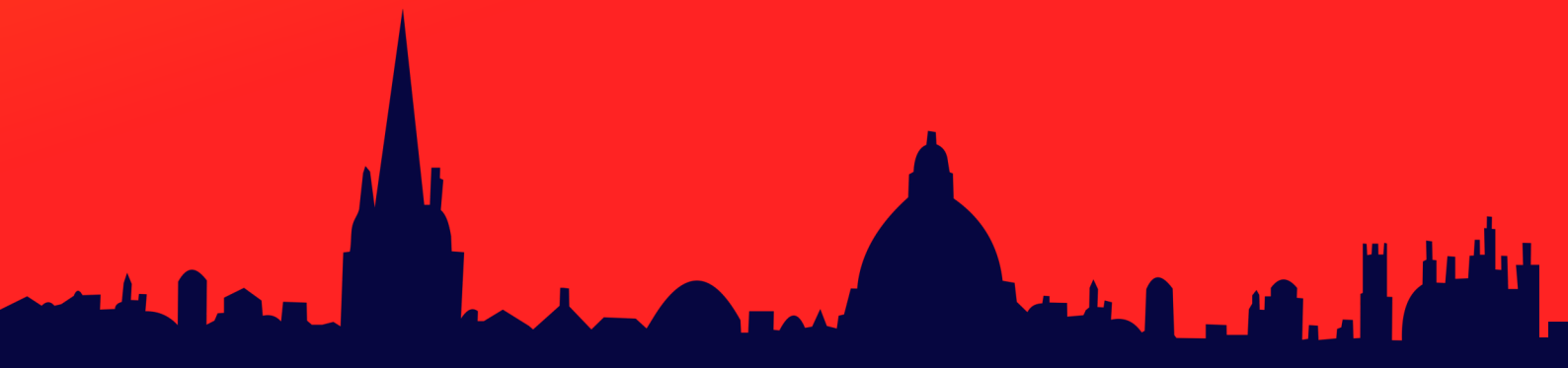
Telephony

Remote Access

Company Files

Order Taking

Voice



STL Connected Business.

Delivering superfast connectivity to businesses across the country.



Where all areas of the business **rely on being always on**



The connected business - where connectivity is about more than just communications. It's how you access key systems, critical data and stay in touch with your customers and supply chain – keeping your business alive and successful.

At STL we provide reliable, high performance fibre connectivity solutions to business and enterprise customers, enabling a truly connected business that drives efficiency, ensures resilience, delivers exceptional customer service and maximises communications.

With exceptional UK coverage we have all variants of connectivity covered - from ADSL to ultrafast 10Gb Fibre Ethernet and MPLS (Wide Area Network) solutions - our connectivity portfolio has an option for every business and every situation.

How long could your business survive **without access to your key systems?**



"What would the impact be if you were to lose connectivity for 24 hours?"

"How much of your business is reliant on connectivity?"

Technology is changing everything. Mobility has changed the way we work. The cloud has changed how we access, store and share information. The internet of things has changed how we see things, contact things and manage things. This means we are living in the age of the connected business – where all areas of the business are reliant on being 'always on' and the customer experience depends on it.

But businesses are being held back with outdated digital infrastructure that is unable to cope with the volume of data we are producing. If this connection fails – even for a minute - the consequences are real. Your business comes to a halt and the channel to your customers is gone.

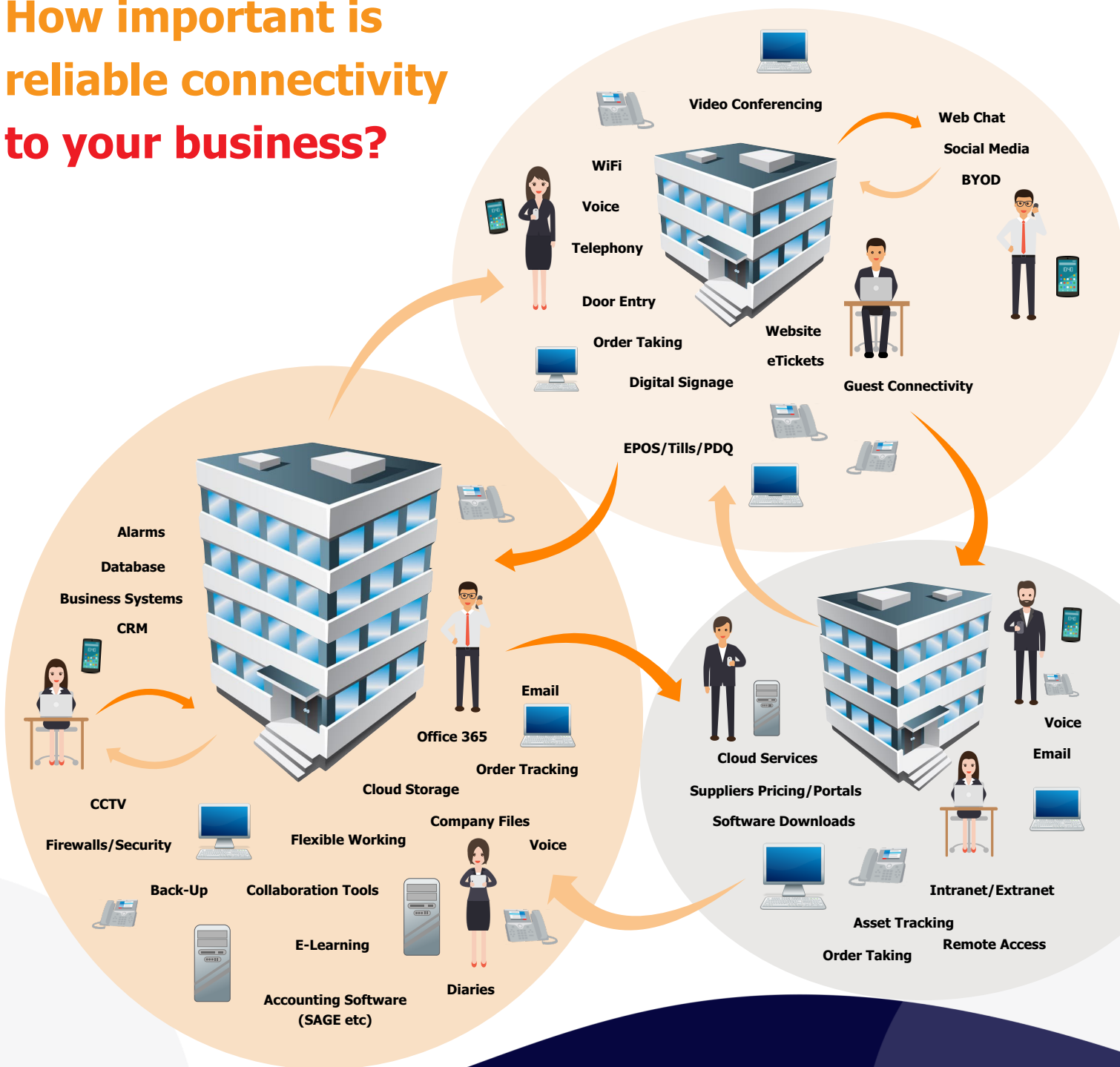
With the rapid growth of data consumption putting increasing pressure on the country's legacy copper infrastructure, businesses are becoming more frustrated with slow, unreliable internet connections hampering their ability to thrive in the information age.

The UK's ever-increasing dependency on connectivity has made high speed, full fibre networks undeniably critical.

Never has it been more important to have a connected business, one that is resilient and 'always on,' and that has connectivity at the core, whilst being fully future proofed and ready to embrace the emerging cloud services that will help you innovate and succeed.

It's connectivity that put simply, makes everything work.

How important is reliable connectivity to your business?



Poor connectivity can impact every area of your business.

So what does good connectivity look like?

At STL we specialise in working with customers to provide them with IT, communication and connectivity solutions to help them address the day to day challenges that the modern workplace brings.

Our connectivity portfolio ensures:

- ★ Ultra-fast, symmetrical speeds and super low latency, allowing limitless capacity
- ★ No slow-downs, no matter how many people are using the network
- ★ Supporting next-generation services, cloud computing, remote back up and disaster recovery
- ★ Revolutionising your business communications with collaboration tools
- ★ Guaranteed resilience, reliability and responsiveness where issues are resolved quickly and efficiently

By having a connected business, you are not only able to provide a better customer experience 24/7 through multiple channels, but internally drive flexibility, scalability and meet changing business demands in a cost effective way.

So what matters when choosing the right connectivity?

- ✔ Local Relationship
- ✔ Reliability
- ✔ Response Times
- ✔ Support
- ✔ Future-proofing
- ✔ Knowledge
- ✔ Flexibility
- ✔ SLA's

STL Business Connect






STL Enterprise Connect



So how can **STL** help?

At STL we understand that having the right connectivity is imperative and as a result have built a market leading connectivity portfolio. 'STL Connect' is for small and medium sized businesses across the UK.

STL Connect delivers fast, resilient and secure connectivity that the modern business demands.

Features	 Business Connect	 Enterprise Connect
Who might use it?	A small business, typically with 1-10 employees	Large office with 10+ staff, maybe with remote workers and cloud based applications
Download Speeds (upto)	1Gbps	1Gbps
Upload Speeds (upto)	220Mbps	1GBbps
Voice Ready/Engineered	Yes	Yes
Failover/Backup Options	4G/FTTC	4G/FTTC/FTTP
Contended	Yes	No
SLA	Yes	Yes
Price Point	£ - ££	££ - £££
Why Use?	High speed, reliable and cost effective connectivity	Robust, dedicated and scalable un-contended connectivity.
	STL Business Connect is a full fibre-based connection, delivering faster speeds and greater reliability than standard copper-based products. A cost-effective connectivity solution for the smaller business who require reliable connectivity, offering peace of mind through a range of backup solutions.	STL Enterprise Connect is a full fibre dedicated one-to-one connection from the customers premises to the core network. It's fast, high performing, secure and always on. The solution is scalable, allowing you to accommodate future growth and provides a comprehensive SLA with a range of backup options.

STL Business Connect and STL Enterprise Connect both have been designed to help fast paced businesses of every size meet the challenges of today's digital economy through our mission critical network, voice and cloud services.

 **Fibre network built for the future**
 **Everywhere coverage**
 **Empowering business**

So what are the benefits?

- ✔ **Meeting the demands of the modern workforce:** users are able to reliably access business systems and applications from wherever they are located and utilise collaboration tools
- ✔ **Keeping your business running:** optional broadband/ethernet or **4G backup** ensures there is no or minimal disruption to business from network or access issues, coupled with industry leading SLAs
- ✔ **Adaptability for changing business models:** connectivity solutions can be modified simply and quickly to support changing business requirements: for example, to service rapidly growing sales volumes
- ✔ **Drive exceptional customer service:** a reliable, flexible and 'always on' connected business drives a differentiated customer experience
- ✔ **Improve efficiency and deliver smarter ways of working:** the business can operate securely in the knowledge that new and emerging technologies such as the cloud and 'as-a-service' can be implemented and utilised securely
- ✔ **Better manage costs:** either by paying only for the capacity and throughput that is required, with a clear per month cost, through to utilisation of connectivity management and monitoring tools to optimise network resources

STL understand. We can help.

STL have 20 years' experience in delivering connectivity to businesses, enabling them to better connect their people and better connect to their customers.

With the 'STL Connect' portfolio, working with industry leading partners, STL are able to be the trusted advisor to our customers – taking the time to understand the connectivity and communications challenges that the customer is facing and delivering the most suitable, best in class solution.

We pride ourselves on being able to offer a personalised service, where the range of solution may be far reaching, but the relationship you will have with us will be local.

Quality is also imperative to us. Every connectivity solution is 'voice ready', ensuring voice quality is always high definition and call reliability is enhanced. We offer proactive monitoring of your connectivity through our Network Operations Centre (NOC) as well as immediate response and level 1 resolution for faults.

Our aim is simple, to deliver outstanding personalised service to every customer – may that be through the delivery of an industry leading solution, competitive and trusted SLA's all the way through to provision of peace of mind through guaranteed resilience and reliability. Your business matters to us.

So why wait? Future proof your business for tomorrow.

"Connect with your customers"



Who have **STL** helped





Connecting business
Connecting people

SCAN ME



"We put the customer first, keep it simple
and make a difference together – it's in the
DNA of everything we do."

Contact us today
We'd love to speak to you



www.stlcomms.com



Email: sales@stlcomms.com



Call: 0800 316 0123



@STLCommsTweets